



# JUNÍN DE LOS ANDES

## PATAGONIA ARGENTINA

EXPERIENCE UNIQUE MOMENTS IN THE HEART OF PATAGONIA

EXPERIENCES, NATURE AND  
OUTSTANDING TOURIST SERVICES

[WWW.JUNINDELOSANDES.TUR.AR](http://WWW.JUNINDELOSANDES.TUR.AR)



# INSTITUTIONAL INTRODUCTION

## PROMOTING LOCAL TOURISM DEVELOPMENT

FROM THE JUNÍN DE LOS ANDES CHAMBER OF COMMERCE,  
WE WORK TO STRENGTHEN, PROMOTE, AND PROFESSIONALIZE  
THE TOURISM OFFERING OF OUR CITY AND REGION.

THIS CATALOG BRINGS TOGETHER A CURATED SELECTION OF  
PROVIDERS THAT REPRESENT THE QUALITY, IDENTITY AND  
DIVERSITY OF EXPERIENCES OUR DESTINATION HAS TO OFFER.

OUR GOAL IS TO CREATE OPPORTUNITIES FOR CONNECTION  
BETWEEN TOUR OPERATORS, AGENCIES, AND VISITORS,  
FOSTERING SECTOR GROWTH AND LOCAL DEVELOPMENT.

WE INVITE YOU TO DISCOVER JUNÍN DE LOS ANDES AND  
CONNECT WITH THOSE WHO MAKE EACH EXPERIENCE  
POSSIBLE.

DRIVING LOCAL TOURISM DEVELOPMENT

Email: [camara@camarajunin.com.ar](mailto:camara@camarajunin.com.ar)  
Social Media: [@camarajunindelosandes](https://www.instagram.com/camarajunindelosandes)

# JUNÍN DE LOS ANDES

## DRIVING LOCAL TOURISM DEVELOPMENT

Located in the heart of Argentine Patagonia, Junín de los Andes is a destination that blends breathtaking landscapes, tranquility, and authentic experiences.

Recognized as one of the world's top fly-fishing destinations, it also offers a wide range of activities: nature tourism, regional cuisine, outdoor adventures and accommodations for every type of traveler.

Its proximity to Lanín National Park and the Andes Mountains makes it a strategic location for those seeking to connect with nature without sacrificing comfort.

Junín de los Andes is not just a destination. It's an experience.

→ [Location](#)

An aerial photograph of a golf course. The foreground shows a green fairway with a small pond. In the background, there is a larger blue lake and a dense forest of tall trees. The sky is clear and blue.

# TOURISM OFFERING

Accommodations

Experiences & Activities

Gastronomy

Development & Investment

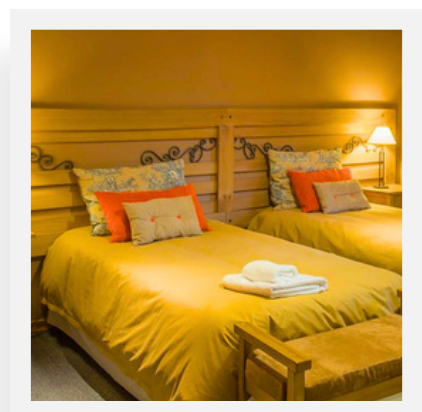
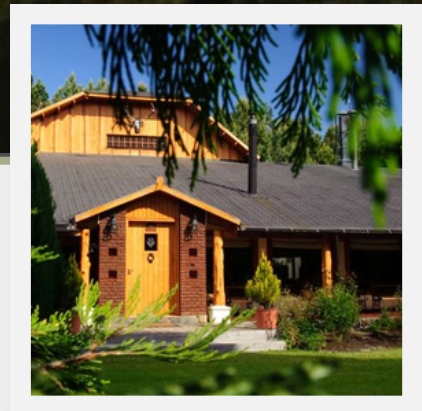


# ACCOMMODATIONS



# San Huberto Lodge

*by Olsen Family*



## SAN HUBERTO BY OLSEN FAMILY

OUTDOOR EXPERIENCES

Located on a 24,000-acre ranch in Northern Patagonia, San Huberto Lodge offers an exclusive experience that combines high-quality lodging with privileged access to the renowned Malleo River, one of the best fly-fishing destinations in the world.

With personalized service, limited capacity, and a strong family tradition, the lodge guarantees a unique stay in direct connection with nature, complemented by regional cuisine and services designed for guest comfort.



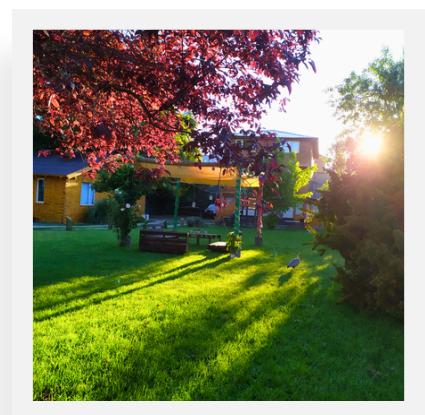
[Location](#)



[www.olsenfamily.com.ar](http://www.olsenfamily.com.ar)



[sanhubertolodge@gmail.com](mailto:sanhubertolodge@gmail.com)



APART  
DRY FLY

Located just 150 meters from the main square of Junín de los Andes, Dry Fly Cabins combine a strategic location with the tranquility of a natural setting.

It offers 7 fully equipped units for 2 to 7 guests, including breakfast and housekeeping, ensuring comfort and functionality for all types of travelers. An ideal option to enjoy the destination year-round, with easy access to fishing, trekking, religious tourism, and lake and river excursions.



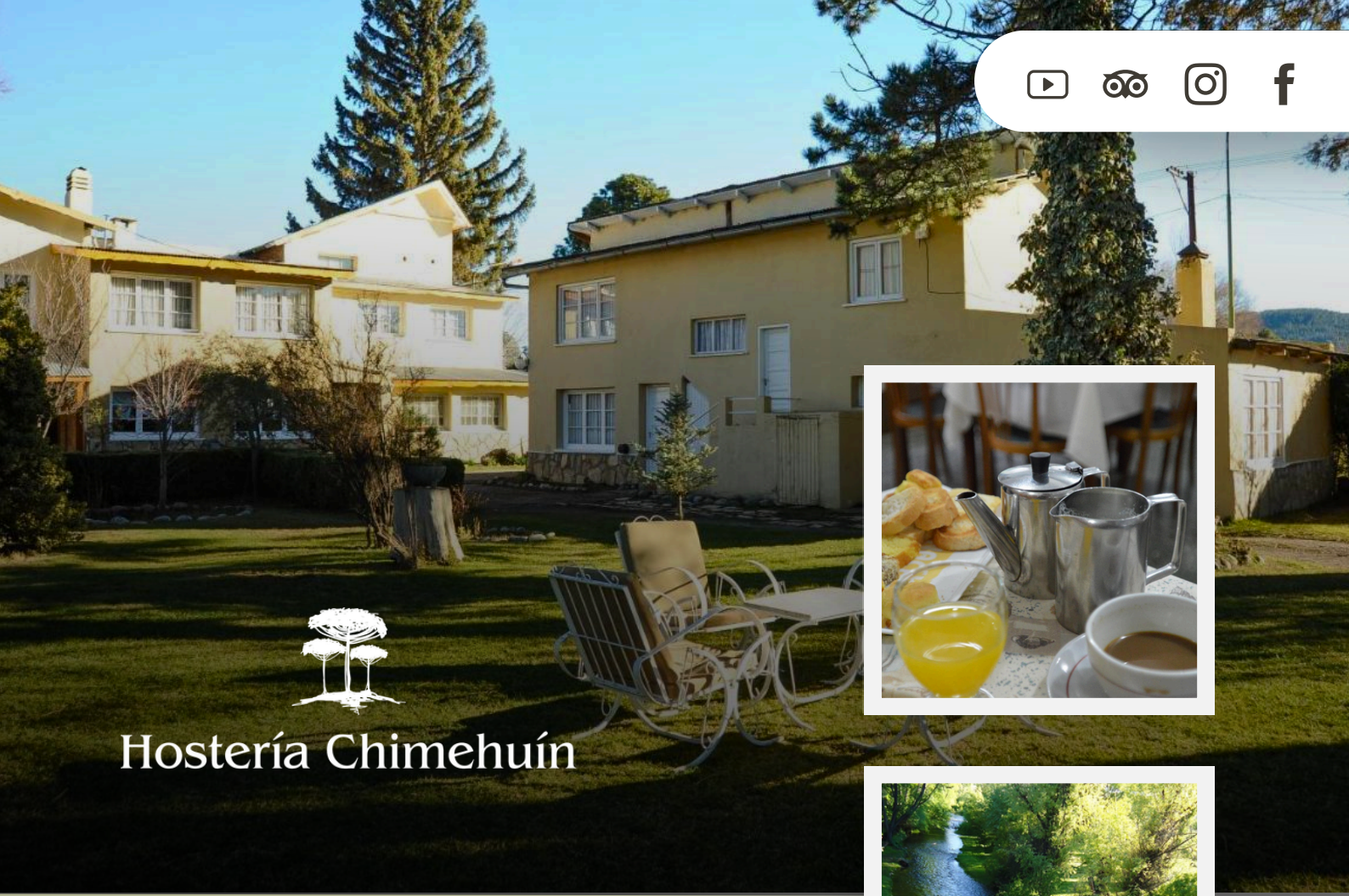
[Location](#)



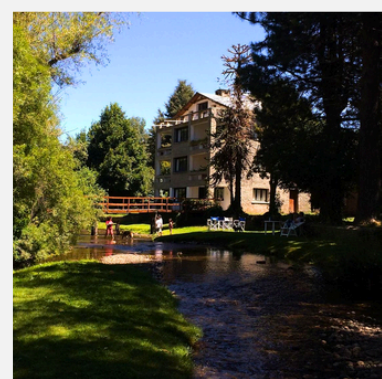
[www.apartdryfly.com.ar/es](http://www.apartdryfly.com.ar/es)



[info@apartdryfly.com.ar](mailto:info@apartdryfly.com.ar)



# Hostería Chimehuín



## HOSTERÍA CHIMEHUÍN

Located on the banks of the iconic Chimehuín River, Hostería Chimehuín is a Patagonian landmark with over 70 years of history.

This lodge blends tradition, nature and hospitality in a unique setting, offering direct access to one of the world's most renowned fly-fishing destinations. With spacious facilities, comfort, and strong identity, it delivers an authentic experience that goes beyond accommodation, integrating nature, culture, and adventure year-round.



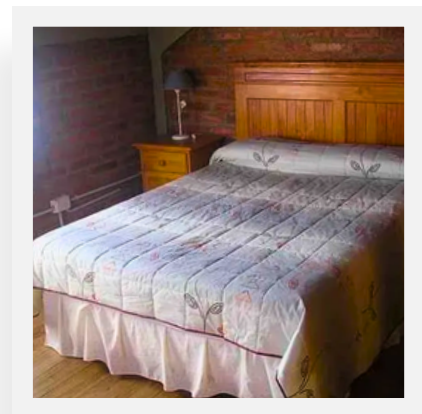
Location



[www.hosteriachimehuin.com.ar/es](http://www.hosteriachimehuin.com.ar/es)



[repcionchimehuin@gmail.com](mailto:repcionchimehuin@gmail.com)



## APART HOTEL PILMAIQUÉN

Located in Junín de los Andes, Apart Hotel Pilmaiquén offers a comfortable and functional option for those seeking independence without sacrificing services.

Its fully equipped apartments are ideal for both short and long stays, with spaces designed for relaxation and everyday living.

Its peaceful environment and proximity to key attractions make it a versatile choice for families, couples, and travelers exploring Patagonia.



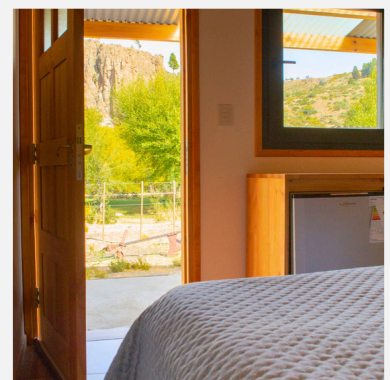
[Location](#)



[davidalan1995@yahoo.com.ar](mailto:davidalan1995@yahoo.com.ar)



**MALLEO  
MEDIO**



**CAMPING  
MALLEO MEDIO**

Located on the banks of the Malleo River on the way to Mamuil Malal International Pass, Malleo Medio offers a peaceful retreat in Patagonia with privileged views of Lanín Volcano.

Its proposal combines nature, tranquility and sport fishing in a family-friendly environment that respects the landscape.

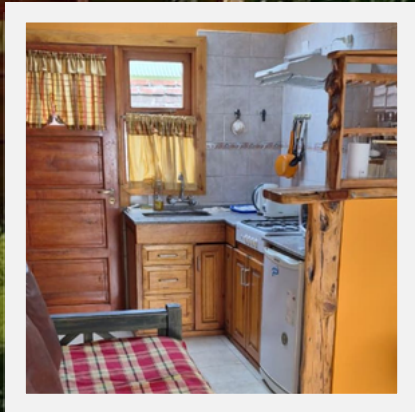
Facilities include fire pits, restrooms, a small store, and accommodation options—ideal for those seeking an authentic nature-based experience.



[Location](#)



[mirtag\\_martinez@hotmail.com.ar](mailto:mirtag_martinez@hotmail.com.ar)

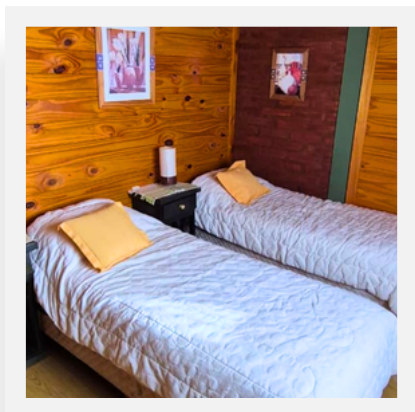


## CABAÑAS DEL JARDÍN

Located in a privileged area of Junín de los Andes, Cabañas del Jardín is a family-run business offering a relaxing experience in direct contact with nature.

Its fully equipped cabins accommodate up to 5 guests, combining comfort and warmth in a peaceful setting.

With easy access to Via Christi Park, the Chimehuín River, and main attractions, it's an ideal year-round option surrounded by landscapes, peace, and harmony.



[Location](#)



[silviascheel62@gmail.com](mailto:silviascheel62@gmail.com)

# El Chimango

CABAÑAS ★★★



## CABAÑAS EL CHIMANGO

Located in Junín de los Andes, Cabañas El Chimango offers warm and comfortable accommodations, ideal for enjoying Patagonian tranquility.

Its fully equipped cabins provide comfort and functionality in a natural environment that invites relaxation.

With a strategic location and personalized service, it's an excellent choice for families and travelers exploring the region year-round.



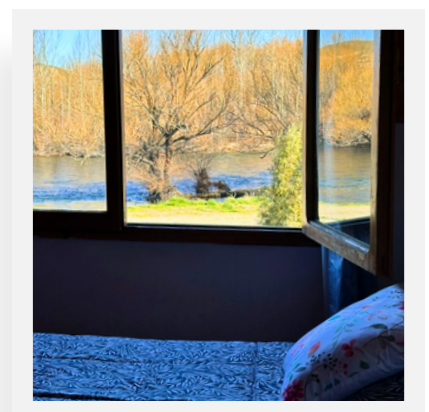
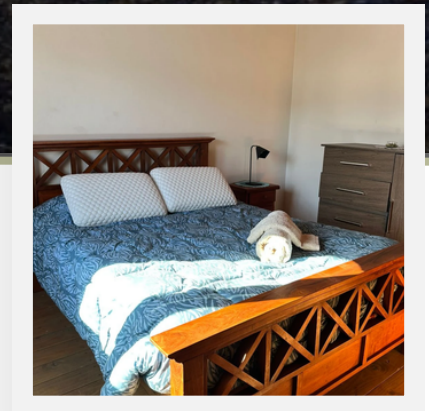
Location



[www.cabanaselchimango.com.ar/es](http://www.cabanaselchimango.com.ar/es)



[cabanaselchimango@live.com.ar](mailto:cabanaselchimango@live.com.ar)



## VIVIENDA CASCADA DE FLORES

Located in front of the Chimehuín River, Cascada de Flores offers a restful experience deeply connected with nature.

Its proposal goes beyond accommodation, inviting guests to explore native plants and their impact on physical and emotional well-being.

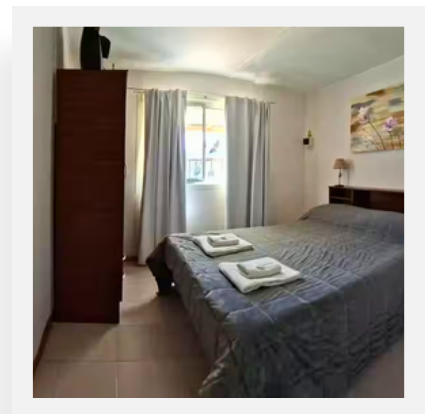
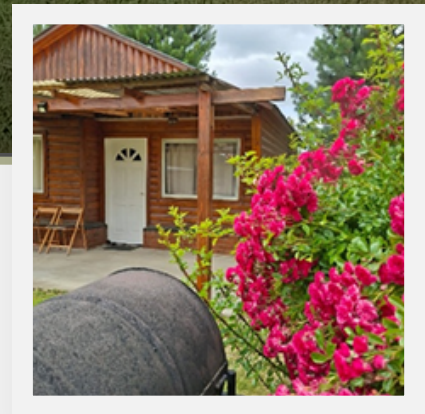
Through personalized blends, aromatherapy, and natural cosmetics, it provides a unique experience focused on balance, relaxation, and conscious connection with the Patagonian environment.



[Location](#)



[alojamientocascadaflores@email.com](mailto:alojamientocascadaflores@email.com)



## VIVIENDA JM

Located just a few minutes from downtown Junín de los Andes, Vivienda JM offers a functional lodging option, ideal for relaxing in a natural setting. With comfortable spaces, a private backyard and personalized assistance from its owners, it provides a welcoming experience designed for families or small groups. Its strategic location allows guests to enjoy both the Chimehuín River and fishing activities, as well as a variety of tourist attractions in the region.



[Location](#)



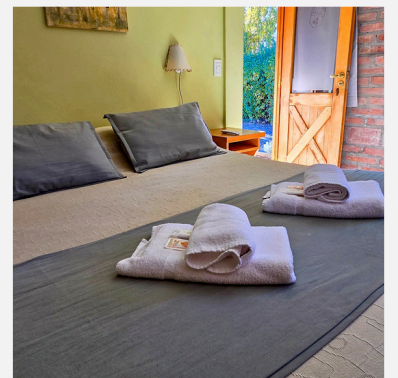
[monicagbelmonte@hotmail.com](mailto:monicagbelmonte@hotmail.com)



## HOTEL RUTA 234

Located in Junín de los Andes, Hotel Ruta 234 is a family-run hospitality business dating back to 1950. It offers fully equipped single, double and triple rooms, including an accessible option for guests with reduced mobility.

Known for its warm and personalized service, regional breakfast, WiFi, and covered parking, it provides a comfortable stay for all types of travelers.



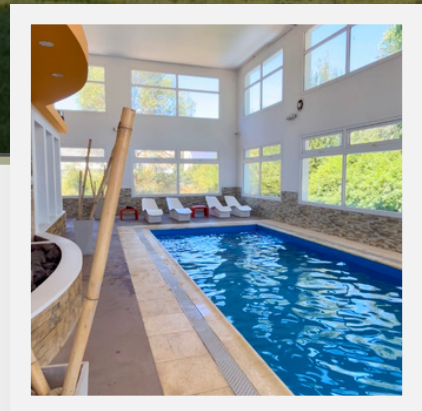
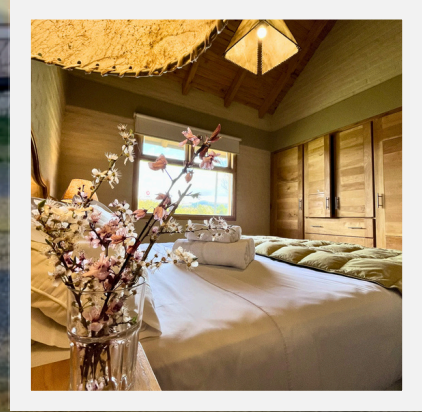
[Location](#)



[www.hotelruta234.com.ar](http://www.hotelruta234.com.ar)



[info@hotelruta234.com.ar](mailto:info@hotelruta234.com.ar)



## HOSTERÍA Y CABAÑAS LAND PARK

Strategically located on Route 40, Land Park is a tourist complex combining a lodge and fully equipped cabins. It offers comfort, quality and a complete experience for families, groups and business travellers.

With modern facilities, full services, and a relaxing environment including a spa and wellness area, it's an excellent option to enjoy Patagonia year-round.



[Location](#)



[www.landpark.com.ar/es/content/3898](http://www.landpark.com.ar/es/content/3898)



[landpark.patagonia@gmail.com](mailto:landpark.patagonia@gmail.com)



# EXPERIENCES & ACTIVITIES



## MICHELLE EYHERABIDE TOURISM CONSULTANT



Michelle Eyherabide offers fully personalized travel experiences in Northern Patagonia, backed by over 35 years of expertise.

Each proposal is tailor-made according to the traveler's interests, combining nature, culture and exclusive activities.

Her goal is to provide genuine access to the destination, transforming each journey into a deep, safe and memorable experience.



Location



[www.mich.com.ar](http://www.mich.com.ar)



[mich@mich.com.ar](mailto:mich@mich.com.ar) /

**Alternative:** [michelle.eyherabide@gmail.com](mailto:michelle.eyherabide@gmail.com)



# GASTRO TRENDS BY COUNTRY



Mushinka Chocolates is a handcraft, author-driven concept born in Patagonia that transforms chocolate into a unique sensorial experience.

With over 20 years of experience, its creator blends flavors, spices, and cultures to craft pieces that tell stories and reflect the identity of the region.

A must-visit spot in Junín de los Andes for those seeking for an authentic, creative, and memorable gastronomic experience.



[Location](#)



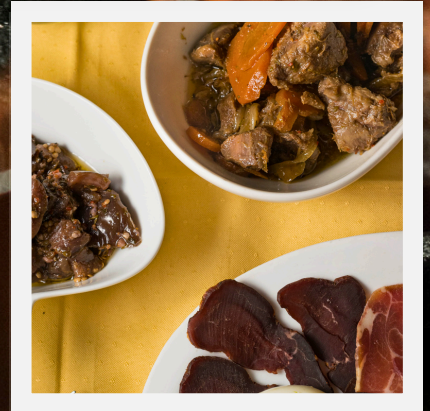
[mushinkachocolates@gmail.com](mailto:mushinkachocolates@gmail.com)



Ruca Hueney is the most iconic restaurant in Junín de los Andes with over 50 years of history.

Known for its warm family atmosphere and authentic cuisine, it is a true meeting point offering regional specialties such as trout and venison, along with homemade pasta, meats and arabian dishes from their own family tradition .

Its welcoming atmosphere and passionate service make every visit a unique experience.



[Location](#)



[www.rucahueney.com.ar](http://www.rucahueney.com.ar)



[rucahueney@fronteradigital.net.ar](mailto:rucahueney@fronteradigital.net.ar)



# DEVELOPMENT & INVESTMENT

# ALTOS DEL SAN JORGE

URBANIZACIÓN  
A. B. & B. Group



Privileged views



Strategic location



Projection and  
development



Altos de San Jorge is a real estate development in Junín de los Andes that combines nature, long-term vision, and quality of life.

Designed for those looking to invest or build their future in the region, it offers lots in a peaceful environment with privileged views and proximity to key natural attractions.

An opportunity to connect with the region's growth, integrating landscape, well-being, and long-term development.



[Location](#)



[altosdelsanjorge@gmail.com](mailto:altosdelsanjorge@gmail.com)

# LIVE JUNÍN DE LOS ANDES

JUNÍN DE LOS ANDES IS MUCH MORE THAN A DESTINATION. IT IS AN ENCOUNTER WITH NATURE, CULTURE AND EXPERIENCES THAT LEAVE A MEMORABLE IMPRESSION.

THROUGH THIS CATALOG, THE CHAMBER OF COMMERCE HIGHLIGHTS THOSE WHO MAKE EVERY MOMENT POSSIBLE: COMMITTED PROVIDERS, AUTHENTIC PROPOSALS AND SERVICES DESIGNED TO WELCOME EACH VISITOR WITH WARMTH AND PROFESSIONALISM.

WE INVITE YOU TO DISCOVER, CONNECT AND BECOME PART OF A PLACE WHERE EVERY EXPERIENCE TURNS INTO A LASTING MEMORY.

JUNÍN DE LOS ANDES AWAITS YOU.

